

YEAR 2013

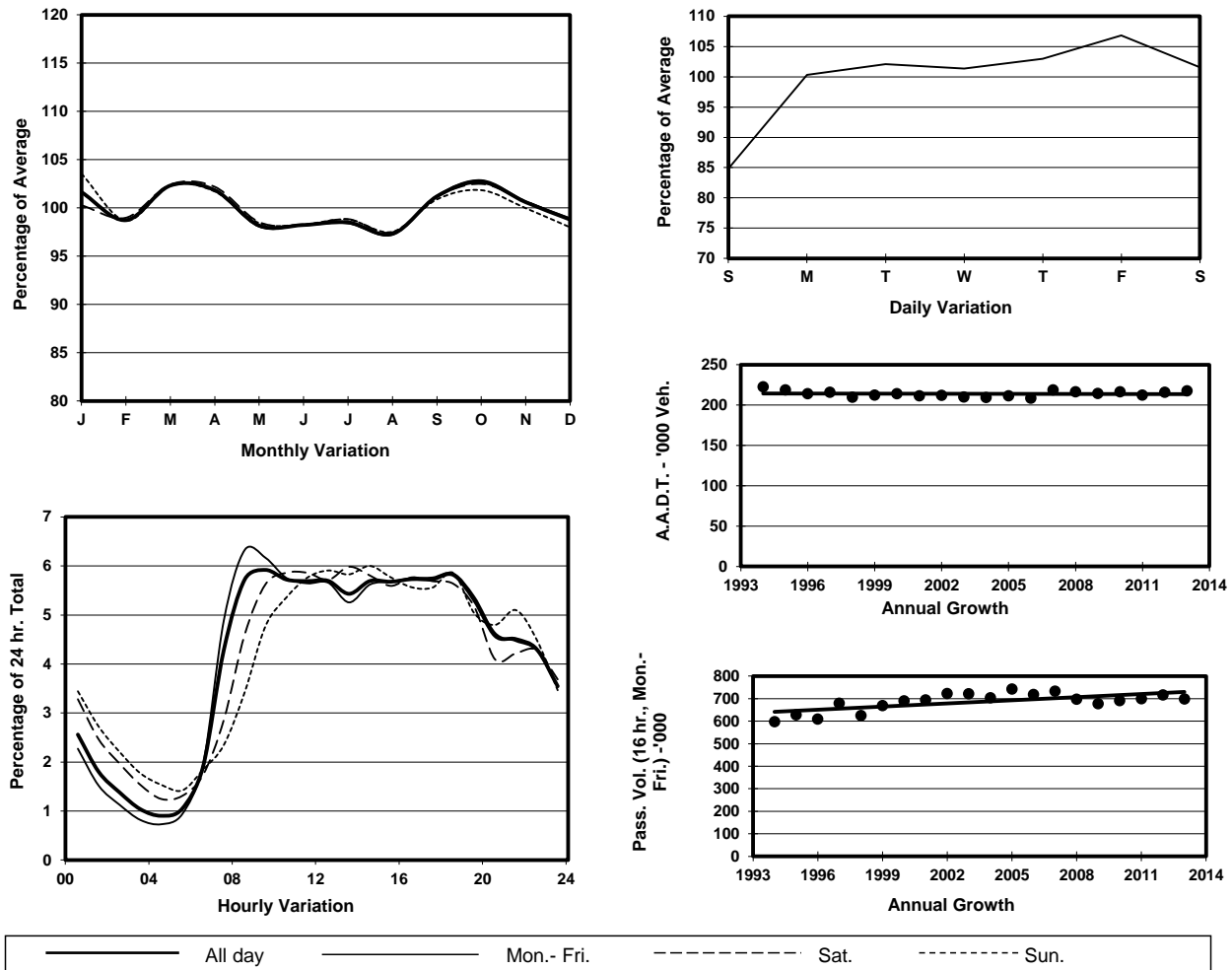
Location

Screenline G-G(East end of Causeway Bay)

Stations on Cordon/Screenline

1002, 1107, 2204 and 2214

1. TRAFFIC FLOW VARIATION AND GROWTH



2. TRAFFIC CHARACTERISTICS (BY DIRECTION)

Parameter	All - Day	Mon. - Fri.	Sat.	Sun.
EAST BOUND				
A.A.D.T.	107200	110740	109220	93660
R 12 / 24 - %	65.3	66.5	63.2	60.4
R 16 / 24 - %	85.1	86.6	81.6	80.8
AM Peak Hour	0900-1000	0800-0900	0900-1000	0900-1000
One-way flow at AM peak hour	5850	6520	5440	4280
T - % (AM)	-	11.2	-	-
PM Peak Hour	1600-1700	1600-1700	1600-1700	1800-1900
One-way flow at PM peak hour	6330	6560	6570	5360
T - % (PM)	-	10.9	-	-
Prop.of commercial vehicles - 16 hr.	-	10.8	-	-
WEST BOUND				
A.A.D.T.	110180	114430	113250	92280
R 12 / 24 - %	69	70.2	66.8	63.9
R 16 / 24 - %	86.5	87.6	83.9	82.4
AM Peak Hour	0900-1000	0800-0900	0900-1000	0900-1000
One-way flow at AM peak hour	7020	7730	7090	4600
T - % (AM)	-	10.2	-	-
PM Peak Hour	1800-1900	1800-1900	1700-1800	1800-1900
One-way flow at PM peak hour	6460	6770	6270	5540
T - % (PM)	-	9	-	-
Prop.of commercial vehicles - 16 hr.	-	10.5	-	-

3. OTHER INFORMATION AND COMMENT

4. Vehicle classification and occupancy - Monday to Friday

Time		Class of vehicle									
		Motor Cycle	Private Car	Taxi	Private LB	PLB	Goods veh.		Non Fr. Bus	Fr. Bus	
							Light	M & H		SD	DD
0700-0800	Pro	2.9	35.2	30.6	3.3	1.6	9.8	1.7	7.6	0.5	6.8
	Ocp	1.1	1.4	2.0	7.4	11.0	1.4	1.4	19.4	20.5	39.4
0800-0900 Peak Hour	Pro	1.6	51.4	25.0	1.4	1.0	8.9	2.0	3.2	0.2	5.2
	Ocp	1.1	1.4	1.9	6.2	14.1	1.6	1.3	13.3	21.5	56.9
0900-1000	Pro	2.4	43.4	25.8	0.8	1.0	14.8	3.3	2.1	0.2	6.3
	Ocp	1.0	1.4	2.0	3.4	11.3	1.6	1.4	14.3	18.3	29.4
1000-1100	Pro	2.0	38.4	29.7	1.0	0.9	17.6	3.4	1.3	0.2	5.5
	Ocp	1.1	1.4	1.9	2.6	8.7	1.5	1.3	6.7	13.3	19.7
1100-1200	Pro	2.3	34.7	30.7	1.0	1.0	19.8	3.5	1.8	0.2	4.9
	Ocp	1.1	1.4	1.9	2.6	5.2	1.5	1.4	5.0	15.1	21.6
1200-1300	Pro	2.3	41.5	27.9	1.1	0.9	16.6	2.6	2.1	0.2	4.8
	Ocp	1.0	1.4	2.0	5.6	8.1	1.5	1.3	14.3	17.5	20.8
1300-1400	Pro	1.6	36.5	29.8	1.1	1.0	18.1	4.4	2.4	0.3	4.9
	Ocp	1.0	1.4	2.0	3.3	7.6	1.6	1.3	9.3	14.3	24.6
1400-1500	Pro	1.7	41.2	25.2	1.4	0.8	18.5	4.1	2.2	0.2	4.8
	Ocp	1.1	1.5	2.1	2.8	7.5	1.6	1.3	5.2	10.9	22.8
1500-1600	Pro	1.6	41.8	27.3	1.5	0.7	16.2	3.2	2.6	0.2	4.9
	Ocp	1.0	1.5	2.0	6.6	8.8	1.5	1.4	13.6	12.2	23.1
1600-1700	Pro	2.3	39.8	25.3	1.5	0.8	18.0	3.0	3.4	0.3	5.6
	Ocp	1.0	1.5	1.9	4.3	9.1	1.5	1.2	11.3	15.2	24.2
1700-1800	Pro	3.4	45.3	27.2	1.2	0.9	11.2	1.6	2.9	0.2	6.1
	Ocp	1.0	1.5	2.0	3.7	10.8	1.5	1.4	8.9	19.0	29.1
1800-1900	Pro	3.1	52.4	26.2	0.5	1.3	7.4	0.9	2.2	0.2	5.7
	Ocp	1.0	1.5	2.1	3.5	12.2	1.5	1.3	9.6	22.8	42.9
1900-2000	Pro	1.9	51.8	31.1	0.3	1.2	5.0	0.6	1.9	0.3	5.9
	Ocp	1.1	1.4	2.2	1.4	9.4	1.5	1.2	9.7	15.9	30.6
2000-2100	Pro	1.9	41.1	43.7	0.1	1.4	3.5	0.5	1.2	0.2	6.4
	Ocp	1.0	1.4	2.1	1.0	8.2	1.4	1.1	3.7	8.7	21.9
2100-2200	Pro	2.0	37.7	47.3	0.4	1.4	2.7	0.7	0.4	0.3	6.9
	Ocp	1.0	1.6	2.0	1.3	6.4	1.5	1.4	5.8	8.3	22.6
2200-2300	Pro	1.5	40.4	47.4	0.1	1.3	2.0	0.4	0.6	0.3	6.0
	Ocp	1.1	1.6	1.9	2.0	6.6	1.4	1.5	3.0	8.2	24.5
16 hours	Pro	2.2	42.3	30.6	1.1	1.1	12.3	2.3	2.4	0.3	5.6
	Ocp	1.1	1.5	2.0	4.7	9.2	1.5	1.3	11.8	15.4	28.9

Legend

- Pro.** Proportion of vehicles in % (Sum may not add up to 100% due to figure rounding)
- Ocp.** Average occupancy of vehicles
- M & H** Medium and Heavy